

Kia ora to families and friends of Lower Moutere School –

17 May 2024

We have had a few chilly starts this week ... still no snow on Tuao Wharepapa – Mt Arthur, however it shouldn't be too far away! Great to see more fleecy tops being worn and as they get peeled off, having them named makes it easy to have them returned!

The new Government has been very busy working towards meeting their election promises. Last week they announced their six priorities for learning:



- *Establishing a knowledge-rich curriculum grounded in the science of learning
- *Implementing evidence-based instruction in early literacy (Te Reo Matatini) and mathematics (Pāngarau)
- *Implementing consistent modes of monitoring student progress and achievement
- *Developing the workforce of the future, including leadership development pathways targeting effective learning support interventions for students with additional needs
- *Using high-performing data and evidence to inform decision-making

There have been many mentions of "the science of learning" in the media recently. A definition for this term is:

The science of learning draws on research from cognitive psychology, neuroscience and education to understand the processes through which we learn.

With our school-wide use of Structured Literacy practices along with good practice that ensures that we have a balance to meet the needs of all students, we have already successfully been using a science-of-learning approach. Our approach provides explicit, systematic, and sequential teaching of literacy at multiple. Our ultimate goal is to have students who are capable and confident readers who have a LOVE of reading a variety of texts. This will transfer to their writing too, and as a result, students achieve. This is supported further from the dedication at home to have children reading for leisure, visiting the library and hearing from other significant people, and the value they put on reading! Children's learning at Lower Moutere School is cumulative, provides practice opportunities and there is an ongoing review of progress. We work to make all learning relevant, purposeful and where possible, linked to local learning opportunities.

The Staff and I feel confident that we are meeting the Government's identified priorities and will continue to examine our practices to ensure that we are meeting the needs of our students – which always has and will be, our focus and purpose.

Winter Sport is well underway!



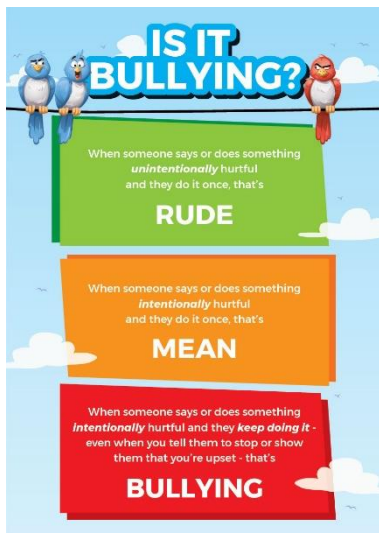
Our winter school sports are now well underway and it is great again to see many teams being entered – a big thanks to parents for getting children involved in sport. So many benefits are made from being involved in sport.

A special thanks to the coaches and team managers for giving up their time to support all children in teams!

As sideline cheerleaders for our children, can we be reminded of what it means to be super sports parent ... for the sake of all our teams!

A reminder too that at the netball courts, the sidelines are a learning space for our coaches and umpires. Please support them by watching the game from the ends of the court. Good luck all of you!

If you have any team fees, can you please ensure that these are paid to the school to enable your child to continue playing for the season – many thanks.



PINK SHIRT DAY ...Today is Pink shirt day. Nationally, we recognise that bullying is NOT ok and days such as today serve to raise our awareness of how we can prevent this happening. It is really important that we know what bullying is, to be an upstander and ensure that we know the RIGHT things to do should we experience or witness bullying. This is a really good table to help us understand what the difference is between being MEAN or RUDE as opposed to BULLYING.

Bullying can be verbal, physical, social or cyber. Please time to talk to your child about these and what they need to do if they experience bullying.

School frontage parking...

The Board is currently trying to work with the Tasman District Council to have the road widened, opposite the school. This would give cars another 1m of parking space on the left-hand side of the road (facing up School Road). The Board would appreciate any emails or letters of support for this as, hopefully, the more community support for making our school safer the higher the possibility of it happening.



With the cooler terms upon us, it is time to remind ourselves of the school uniform for the winter season.

Students wear a school fleece (we have many spares at school), the school shirt (available from Whitwells) and either BLACK shorts or fleecy pants. If students are needing to wear a thermal, it can be either BLACK or DARK BLUE. Students can of course wear a jacket to school for extra warmth during breaks etc.

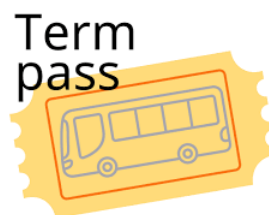
Just a reminder that if you need to collect your child early from school, please come through the office to let us know. Thanks!

BUS PAYMENT AND SCHOOL BUS PASSES

A reminder that Mrs Matthewson is our school bus controller and she is holding bus passes for our students who travel from Motueka to school each day. Please remind your child to collect this – it is available after payment for the term is received. **The cost for the Motueka bus is \$40 for one child - \$75 for a family.** If you pay by internet banking, please ensure you put the family surname as reference. If you are needing to set up an automatic payment, please contact us. The school bank account is 12-3158-0184739-00.

Payment for bus passes need to be made to the school office by TUESDAY 21st MAY 2024.

If no payment is received by this date, students will not be able to travel on the service.



The colder months bring the coughs and colds and the hard decision is made – do I send my child to school ... Thanks to the families who communicate student absence to us so effectively in relation to this. The emphasis in terms of attendance is for pupils to be at school every day, so as to benefit from uninterrupted learning opportunities. Please support our drive to achieve this by sharing our collective vision that 'Everyday Matters'.

Thanks for your support for Lower Moutere School!

Chris Bascand (JP)
Principal

Absentee Messages - Please notify the school of your child's absence before the start of school each day.

Please note: When texting the school cellphone please include your name, so that we know who the message is from, as we do not have contacts stored on this phone.

Ph: 03 526 7775 or **Txt:** 027 339 8801

Please provide the following details: Your child's name, room number and reason for absence – thanks!



Upcoming Events

Board meeting	Thursday 23 May	Staffroom	
LMS Cross Country	Thursday 30 May	LMS hall carpark	
Kings Birthday Public Holiday	Monday 3 June		School closed
TEACHER ONLY DAY	TUESDAY 4 JUNE		All schools closed– Motueka district
Reading Together programme	Thursday 6 June	Room 3	
District Cross Country champs	Friday 7 June	Rabbit Island	
Bike Safety week	Mon 10 – Fri 14 June		Years 5- 8
Dental van arrives	Friday 14 June		
Board meeting	Thursday 20 June	Staffroom	
Matariki celebration	Thursday 27 June	School grounds	6am breakfast & celebration
Matariki Public Holiday	Friday 28 June		School closed
Dental van leaves	Friday 5 July		
Last day term 2	Friday 5 July		
First day term 3	Monday 22 July		Welcome back!
Last day term 3	Friday 27 th September		
First day term 4	Monday 14 th October		
End of year celebration	Wednesday 11 th December		
Last day term 4 – Finish 12pm	Friday 13 th December		



Golden Apiaries is a small family-owned business servicing Tasman, Golden Bay and Marlborough. They supply raw honey, pollination services and queens. The closest stockists of Tasman Gold Honey are Potters Patch in Motueka, which has their full range, Toad Hall, BeetRoot and Connings. You can also purchase directly through Choice or by emailing info@goldenapiaries.co.nz



NEON QUIZ NIGHT

ALL AGES WELCOME

MAY 25TH AT THE REC CENTRE.

DOORS OPEN FROM 6:00PM, QUIZ STARTS AT 6:30PM.

SILENT AUCTION ON THE NIGHT.

\$2 ENTRY PER PERSON.

REGISTER TEAMS THROUGH SHIA.B@SPORTTASMAN.ORG.NZ
WALK INS ON THE NIGHT ARE WELCOME TOO.

HOSTED BY THE MOTUEKA YOUTH COUNCIL
KAI AND DRINKS SUPPLIED ON THE NIGHT

SPORT TASMAN

more people, more places, more fun

INDOOR

MARKET &

GARAGE SALE

SUNDAY 9TH JUNE

10AM – 2PM

MOTUEKA MEMORIAL HALL
PAH STREET, MOTUEKA

PITCHES AVAILABLE \$15 OR \$25 EACH

TEXT 021 069 3258 TO BOOK
OR MORE INFORMATION



MOTUEKA HIGH SCHOOL PRESENTS

TALENT QUEST

2024

STAFF/STUDENT ART DISPLAY

TICKETS AVAILABLE AT UNICHEM AND MHS OFFICE

UNICHEM IS CASH ONLY BAKE SALE
PRESCHOOLERS FREE BACK OF HALL
ADULTS \$10 BRING COINS
STUDENTS \$5 FUNDRAISING FOR GLOBAL STUDIES

FINAL MAY 17TH 7PM

Repair CAFE

AT THE MOTUEKA LIBRARY

18 MAY

10am - 1pm

THE 3rd SATURDAY OF EACH MONTH

Our volunteers may be able to help with:

- Sewing Repairs
- Gluing Repairs
- Electrical Repairs (smallish items only)
- Wood Repairs (eg chairs)
- Blade Sharpening (knives / tools)
- Slot Car (and other electric toy) Repairs
- General Household Item Repair
- Getting New Life out of Older Computers

 **REDUCE WASTE & SAVE**



Kaiteiteri gold
Half Marathon - 15km - 8km Trail Courses

Kids Race

3.2km Trail Course

11:30 am, 02 June



- Ages 5 - 14
- \$5 entry. Spot prizes. Earn a donation for your school (t&cs)
- More info: <https://www.kaiteiterigold.org/>

Another fundraising event from the team at Active4Good

Gymnastics Nelson

Class Schedule 2024



RECREATIONAL GYMNASTICS

This programme is focused around learning the basics of gymnastics and getting an understanding of each of the different apparatus. This programme also caters to children who have had some experience with gymnastics and looks to build on the basics to develop more complex skills across the apparatus.

AGES 5-12

Monday	3.40PM - 4.35PM	Saturday	9AM - 9.55AM
Tuesday	3.40PM - 4.35PM	Saturday	10AM - 10.55AM
Thursday	3.40PM - 4.35PM	Saturday	11AM - 11.55AM
Friday	3.40PM - 4.35PM	Saturday	1PM - 1.55PM

PRESCHOOL GYMNASTICS

The aim of this class is to have fun while learning & developing basic gymnastic and fundamental movements along with co-ordination and confidence.

AGES 2-5

Monday	11AM - 11.45 AM
Tuesday	1.15PM - 2PM
Wednesday	10.45AM - 11.30AM

AGES 3-5

Saturday	9AM - 9.45AM or 10 - 10.45AM
----------	------------------------------

YOUTH PARKOUR

Our Parkour program is designed to inspire creativity, develop physical fitness, and instill confidence while teaching the fundamental movements and principles of Parkour.

AGES 8-14

Friday	3.40PM - 4.35PM
Saturday	12PM - 12.55PM

HOMESCHOOL GYMNASTICS

The aim of this class is to provide an environment for homeschooled children to be around like-minded athletes to develop gymnastic skills!

AGES 5-15

Thursday	10.45AM - 11.45AM
Friday	11AM - 12PM or 12.30PM - 1.30PM

TUMBLING

Tumbling is a gymnastics discipline that focuses on acrobatic skills without the use of any specialized equipment. It can be an excellent option for those who still want to work on flexibility and strength without having to use other gymnastic apparatuses.

AGES 8-15

Saturday	11AM - 12PM
----------	-------------

ADULTS GYMNASTICS

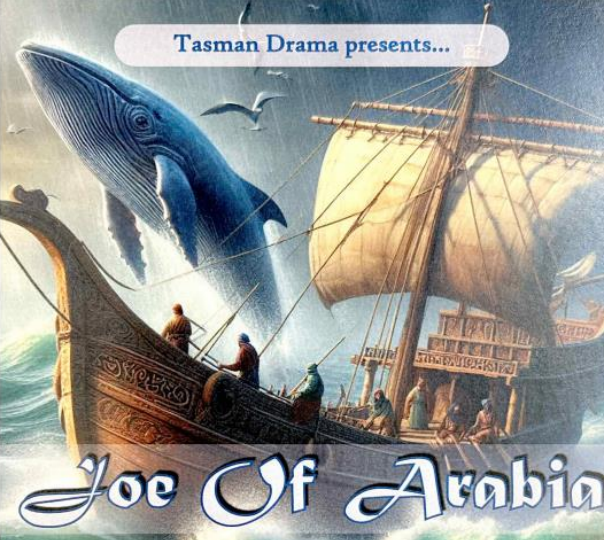
A semi-structured class for adults wanting to focus on flexibility, strength, cardio, and tumbling skills.

AGES 18+

Wednesday	7AM - 8AM or 7PM - 8PM
-----------	------------------------

info@gymnast.co.nz - www.gymnast.co.nz - 03 548 2513

Tasman Drama presents...








Joe Of Arabia


a fishy tale by Douglas Roberts

Tasman Church, 6 Williams Road, Tasman
Fri May 17 - 7.30pm & Sat May 18 - 2.30pm & 7.30pm

Book tickets at tasman-drama.7am.events
or scan the QR code

with support from:





Supporting Ethnic Women

CROSS-CULTURAL PARENTING WORKSHOP IN MOTUEKA

This workshop will help you navigate the challenges of parenting in New Zealand when you come from a different cultural background



WHAT YOU'LL GAIN:

- INSIGHTFUL DISCUSSIONS
- PRACTICAL TIPS
- SUPPORTIVE COMMUNITY

TIME: 10 AM-3 PM
DATE: SAT 25 MAY 2024

Venue: Motueka Family Service, 27 Talbot Street, Motueka.
Scan QR code to register or call 0226847284



Supporting partners:




JULY HOLIDAY PROGRAMMES

KAITIAKI KIDS

AVAILABLE TO: 10-12 YRS
COST: \$350pp
5 days, 9am - 3pm



GO WILD!

AVAILABLE TO: 7-10 YRS
COST: \$350pp
5 days, 9am - 3pm



Plus we have programmes for 14 -18yr olds

Enrol now!

www.wio.org.nz



Can you help?



are collecting cans to sell for some much needed cash

Just collect your aluminium cans
and drop them off to us at
452 Lower Queen Street, Richmond



AIRROLL ramps Party Hire



**Only \$100
per day**

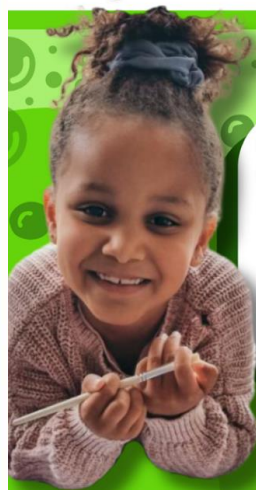
Add a 3 foot quarter
and a 2 foot spine
for an extra \$50

- You Get:**
- 2 Quarter Pipes
 - 1 Kicker Ramp
 - 1 Table Top
 - 1 Manual Pad
 - 2 Small Launch Ramps
 - 1 Large Launch Ramp
 - 1 Grind Rail
 - Free Delivery in Nelson & Richmond



For ramp hire or sales enquiries
Phone 021 847 337 or email airrollramps@littlereds.co.nz

Shop with us!



school
fundraising shop



10% is
Donated to
**Lower Moutere
School**

Paying it Forward,
Together!

www.schoolfundraisingshop.org.nz